



Vasc-Alert Management Reports

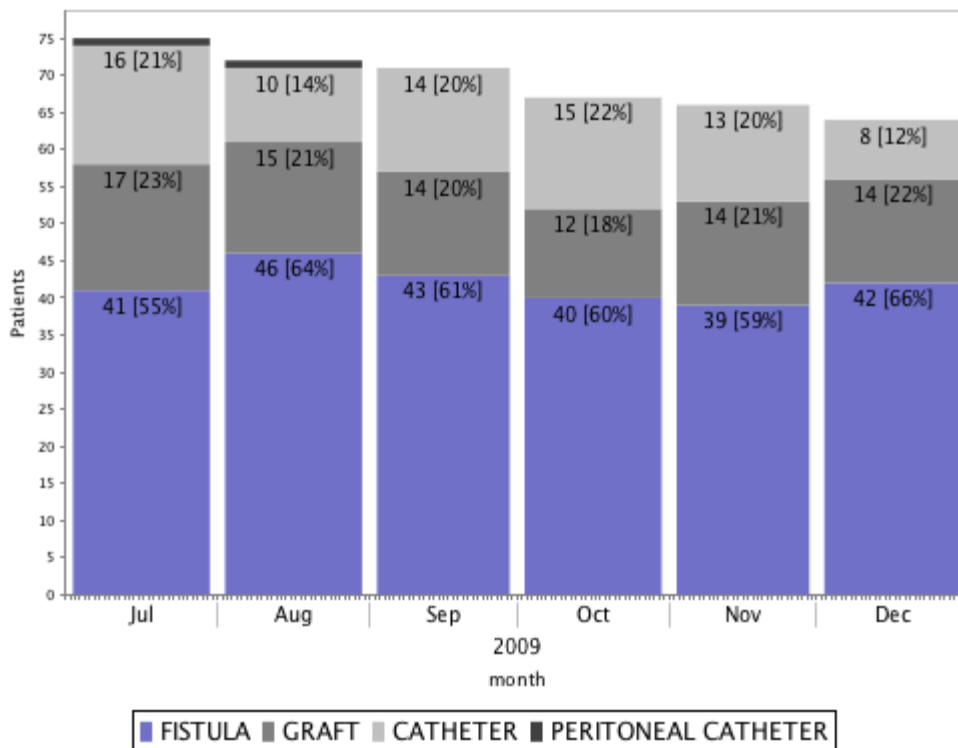
The Vasc-Alert management reports provide an upper-level view of the center results. These reports are generated on a monthly basis. While the weekly reports give information about specific patients, the management reports are designed to let you monitor trends in center performance. These reports contain information for the prior 6 months.

Management reports for the prior month are generated in the first full week of the next month.

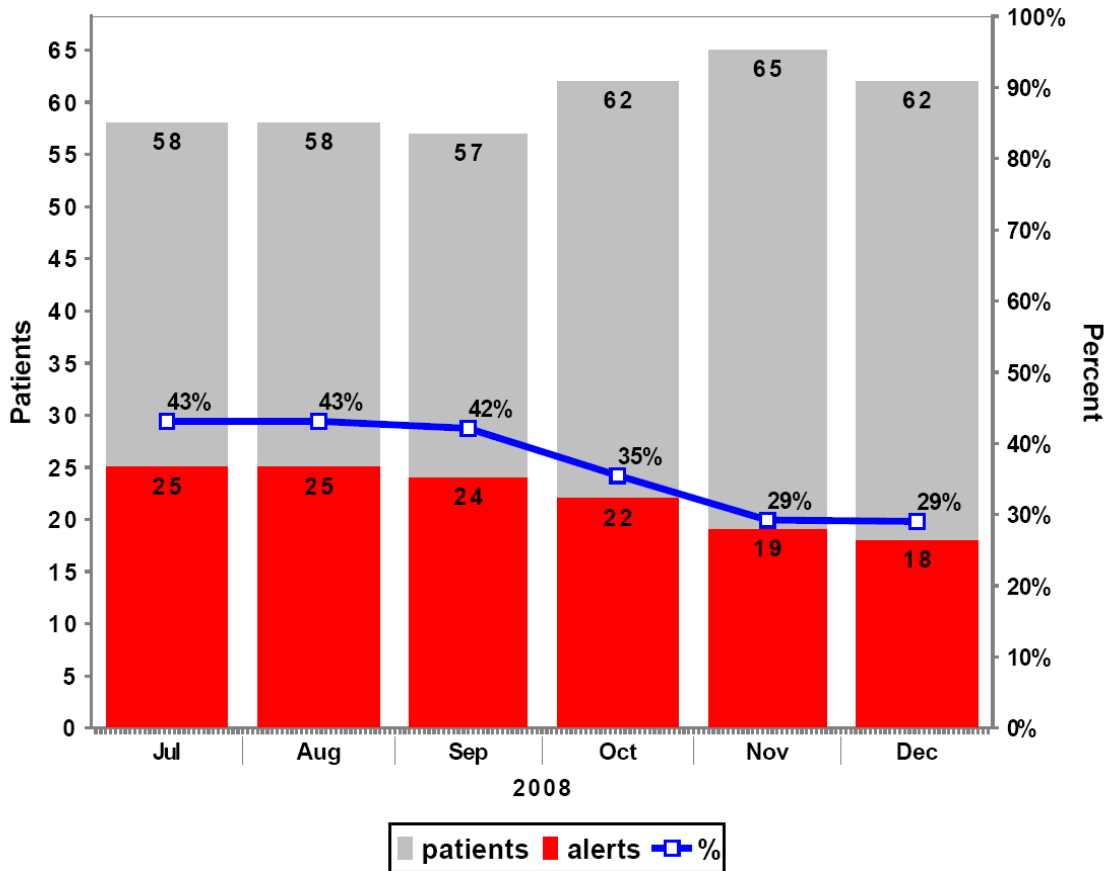
Types of reports

There are currently three management reports. These include the Access Type Distribution report, Patients on Alert by Month report and the Blood Flow Deviation report. The following pages contain examples of these reports.

The **Access Type Distribution report** shows the number and percentage of patients using different types of access: AV fistula, AV graft, and catheter. You can use this report to monitor progress towards the goal of increasing the number of patients using fistulas. If the percentage of patients on catheters rises suddenly, that can be a trigger to look more closely at what may have changed inside the center.



The **Patients on Alert by Month report** indicates by percentage the number of patient who received an alert in the past 30 days. Ideally, this report will show a gradual decline in the percentage, although the percentage will level out at some point. Continued high values may indicate that patients are not being referred for intervention.



Please remember that the results at small centers can be disproportionately affected by a change of just a few patients.

You may also receive the **Blood Flow Rate Deviation report**. This report compares the prescribed blood flow rate with the achieved blood flow rate for each patient. Patients are ordered by the percentage of difference between prescribed and actual rates during the most recent month.

Name [MRN]	PBFR	BFR	% + or - from PBFR
SHINABARGER, CATHRYN [CH7158]	400	337.19	-16%
SALTZMAN, EUGENA [1699]	400	357.52	-11%
FASHEH, NICOLASA [CM1268]	400	366.74	-8%
LUKASIEWICZ, NOEMI [WW6201]	400	377.93	-6%
LEEHAN, HALINA [LG3916]	500	480.97	-4%
DECANDIA, HALINA [RL7021]	400	388.38	-3%
WALLA, CHERISE [2005]	400	391.55	-2%
FURUYA, TORI [RM7038]	480	480.00	0%